

Figure 5.8 Wire visualization.
CFA: common femoral artery; DFA: deep femoral artery; FH: femoral head; FV: femoral vein; SFA: superficial femoral artery.

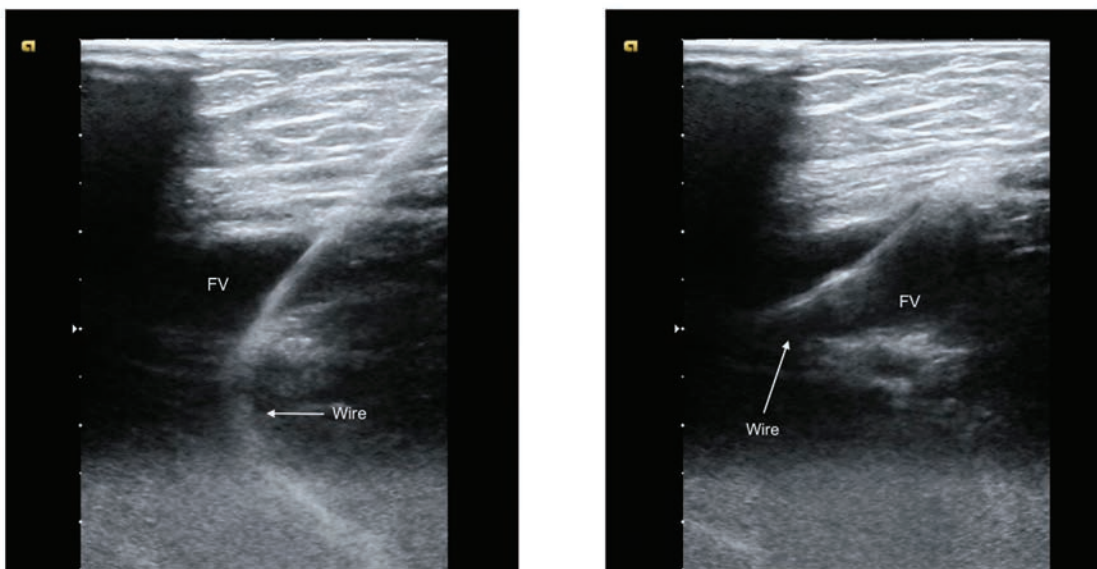


Figure 5.9 Wire back-walling the vein (**left**), subsequently repositioned (**right**).
FV: femoral vein.

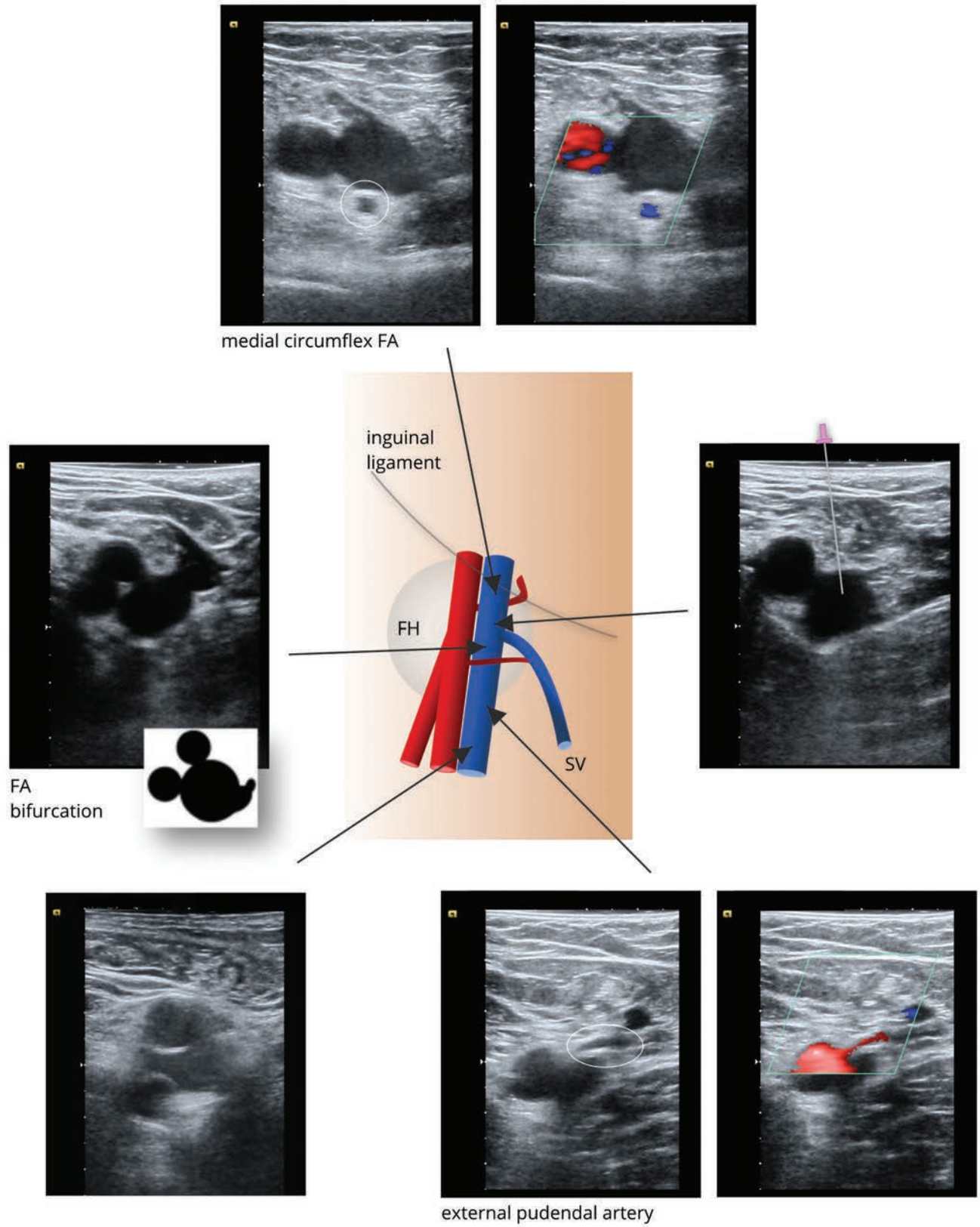


Figure 5.10 Femoral vein access.
FA: femoral artery; FH: femoral head; SV: saphenous vein.